

OBERON INTERNATIONAL

ENGINEERING CONSULTANCY & EQUIPMENT SUPPLIER

"Our Expertise— Your peace of Mind"

www.oberon.com.bd

Company Profile

- ☐ Quality
- ☐ Commitment
- ☐ Professionalism





Started its Journey on 1st January 2017, providing essential services to the Engineering Field, especially committed to contributing towards an embodiment of the maritime industry of Bangladesh.

We also pursue developing new opportunities and collaborations in other engineering sectors, such as civil and electrical. As a Young company in the industry, we could make our identity over the years.



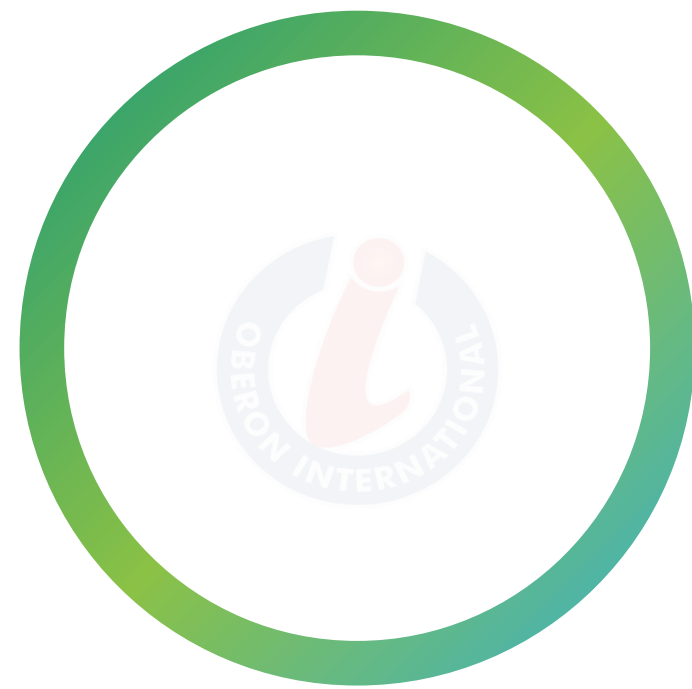
“To set a company that will resonance with hard work, on time delivery, high quality together with social and environmental commitment”.



“To provide services to all our customer which will be reliable , cost effective, high quality through our skilled worker, commitment, professionalism and strive for continuous improvement”.

MEET THE TEAM

3



A S M Arifuzzaman

CEng, CMarEng, FIMarEST

CEO & FOUNDER

+8801714107823

Core Knowledge and Skills

- ✓ **Operational leadership.**
- ✓ **Technical Management**
- ✓ **Supply Chain Management**
- ✓ **Business integration.**
- ✓ **Business development & diversification.**
- ✓ **Process Improvement.**
- ✓ **Strategic Planning**

PERSONAL AFFILIATION:

1. FELLOW

2. LIFE MEMBER

3. Member

4. Member

: IMarEST- (Membership No: 8007415)

: Bangladesh Merchant Marine Officers Association

: Chartered Institute of logistics and Transportation.

: Chittagong Boat Club, Chittagong Bangladesh.

MEET THE TEAM

4

PREVIOUS EXPERIENCE- WHICH DRIVES TO START OWN BUSINESS

Total Work Experience at Sea: 13 Years, At Shore: 15 Years. Total: 28 Years.

Designation : Head of Supply Chain & Project Management.
Duration : 1st Jan 2010 ~ Dec 2016

Western Marine Shipyard: A leading shipbuilding company in Bangladesh.

Major Product: 5000~8000 DWT MPC Vessel, Tanker, Tug boat various Bollard Pull, Offshore Patrol Vessel, Ro-Ro Passenger Vessel and SOLAS Passenger Vessel.

Major Client: EU (Germany and Denmark), East Africa (Kenya, Tanzania, Uganda, Gambia) and India.

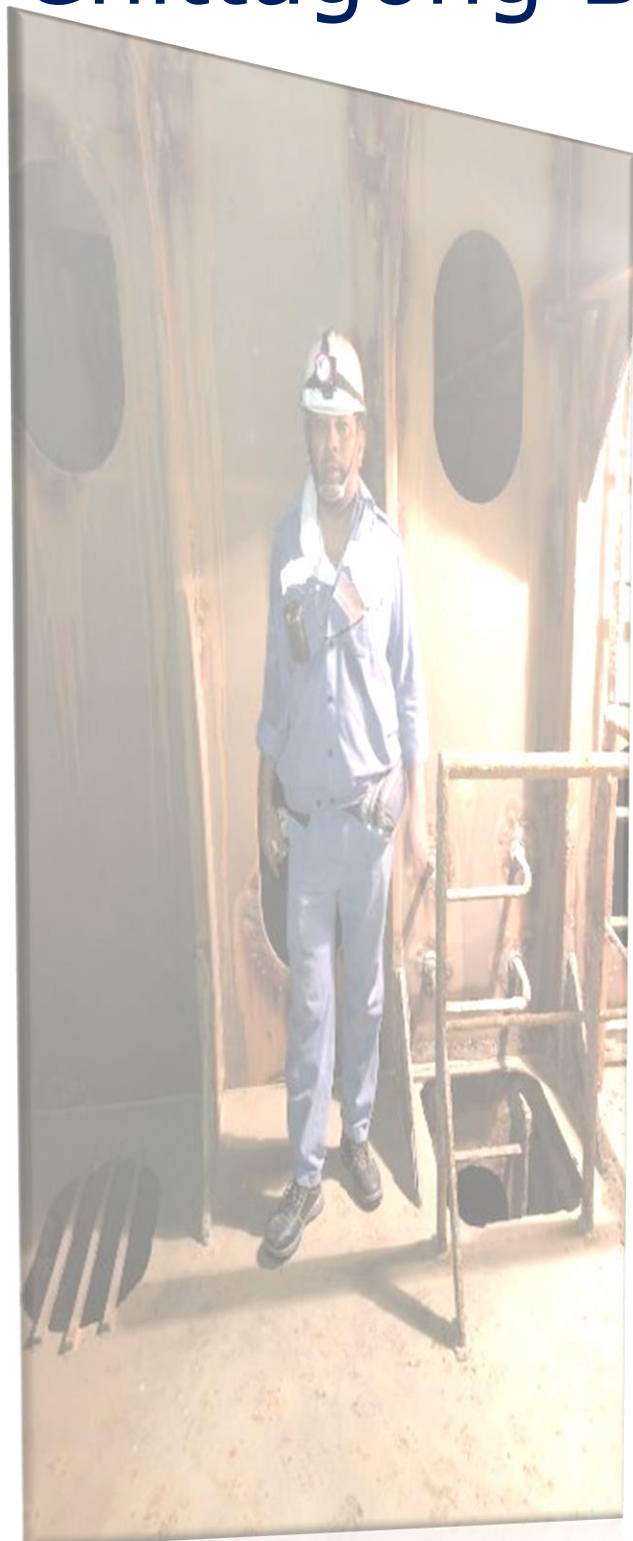
Web: www.wms.com.bd.



MEET THE TEAM

Designation : **Technical Superintendent.**
Duration : 1st Jul 2008- 31 Dec 2010

Company Description: Ship Management Company and managing total 10 ships from various Owner. All vessels are bulk carrier between 15,000 ~ 35000 DWT, having office at Singapore and Chittagong Bangladesh. Web Address: www.nobpac.com.bd.



Sea Experience: 13 Years sea Service from cadet to Chief Engineer at various national and Global Shipping Company, Namely: Bangladesh Shipping Corporation, American Eagle, Ocean Tanker.

Vessel Type : General Cargo, Bulk carrier, Livestock, Product and Crude oil carrier.

GT Maximum : 145,661.

DWT : Max.300,000 DWT

Engine Power : Max. 25090 Kw.



MEET THE TEAM

6



Engr. Subash Moy De

Sr Project Engineer

30 years Experience in Ship-building and project supervision



Nasir Uddin

Sr Manager

Business Development & SCM

8 years Experience in Marine Engineering, Repair and Yard Supervision



Engr. Javed Kaiser

Assistance Manager

Business Development.

7 years Experience in Outsourcing and commercial



Engr. Maruf Ahmed

Project Engineer

12 years Experience in Ship-building and project supervision



Jahid Hasan Anik

Executive

Business Development

MEET THE TEAM



Salauddin Chowdhury Tamal

Head of Department

Finance and Operation

**7 years Experience in Audit & Project
Finance Management**



Rejaul Haque

Project Supervisor



Md Ali Faisal

Manager & Coordinator

Shipping and Survey

WHAT WE DO

- ❑ ***Supply Chain Solutions***
- ❑ ***Project Management for New-Building Vessels***
- ❑ ***Maintenance Overhauling & Retrofitting for running fleet***
- ❑ ***Hull Construction, Machinery Installation & Commissioning***
- ❑ ***Manufacturing Model Assessment***
- ❑ ***Quality Systems Deployments***
- ❑ ***Industrial and Marine Project Management***
- ❑ ***Damage Analysis and Risk Assessment***
- ❑ ***Material and Equipment Supply***
- ❑ ***Marine Surveying (Condition, Pre-Sale and Pre-Purchase)***



OUR HISTROY



2021 ACCOMPLISHMENT

- Started Marine Survey under the banner of world reputed Survey company such as Idwal marine and Aalamr-UK
- Enlistment with Bangladesh Navy NSD-CTG and Chattogram Dry Dock



2020 ACCOMPLISHMENT

Started Repair works for Inland vessels with MMD and Class approved Workshop.



2019 ACCOMPLISHMENT

Started Business with Equipment and Spare Parts supply for Various coastal and Inland vessels for running fleet and as well as newbuilding vessels.



2017 ACCOMPLISHMENT

Stablished the Company and Started business with Consultancy and Project management for Shipbuilding.

OUR MAJOR COMPLETED PROJECTS

10

WORKSCOPE: EQUIPMENT SUPPLY, INSTALLATION SUPERVISION & PROJECT MANAGEMNT



6X 2000 DWT STONE CARRIER



8 X 4800 DWT CARGO VESSEL



8 X 4200 DWT OIL TANKER



9 X 2300 DWT GEN CARGO VESSEL



Fire Pump and system in Maritime Institute



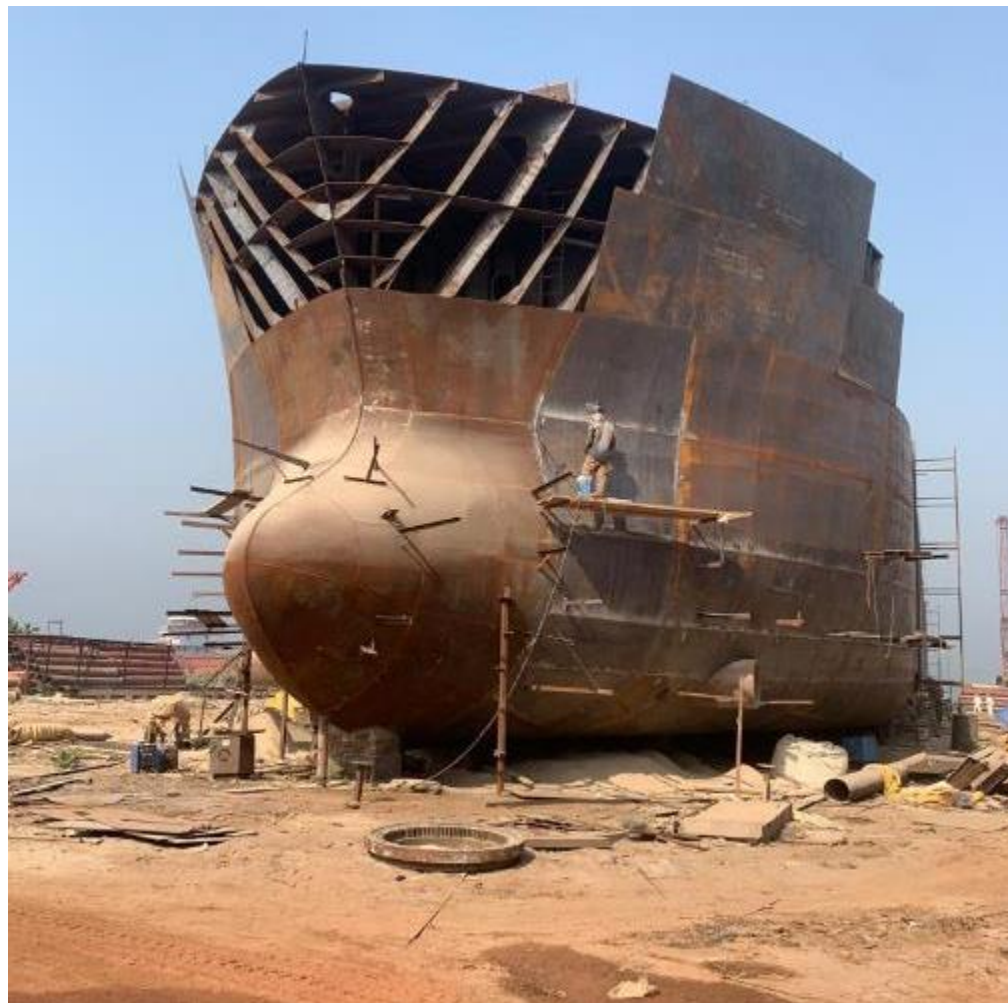
4 X 2200 DWT LIGHTER CARGO



OUR MAJOR ONGOING PROJECTS

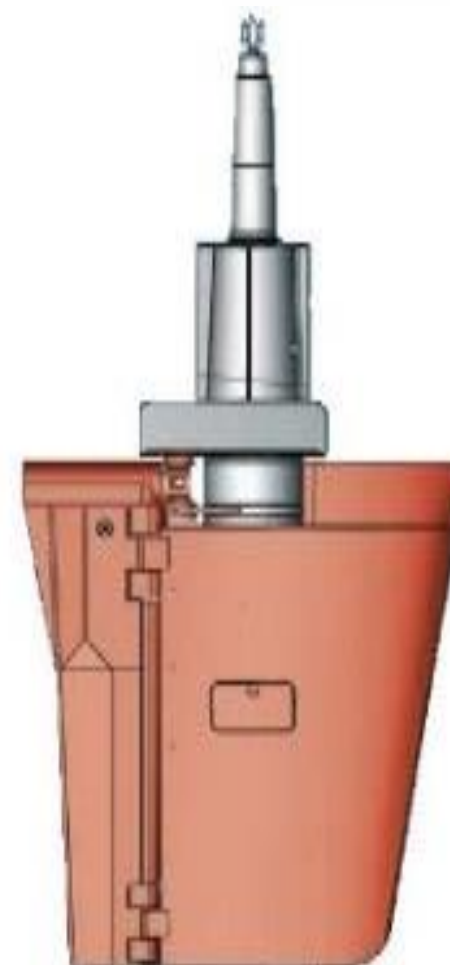
12

WORKSCOPE: EQUIPMENT SUPPLY, INSTALLATION SUPERVISION & PROJECT MANAGEMNT



PRODUCTS WE SUPPLY

13



PRODUCTS WE SUPPLY

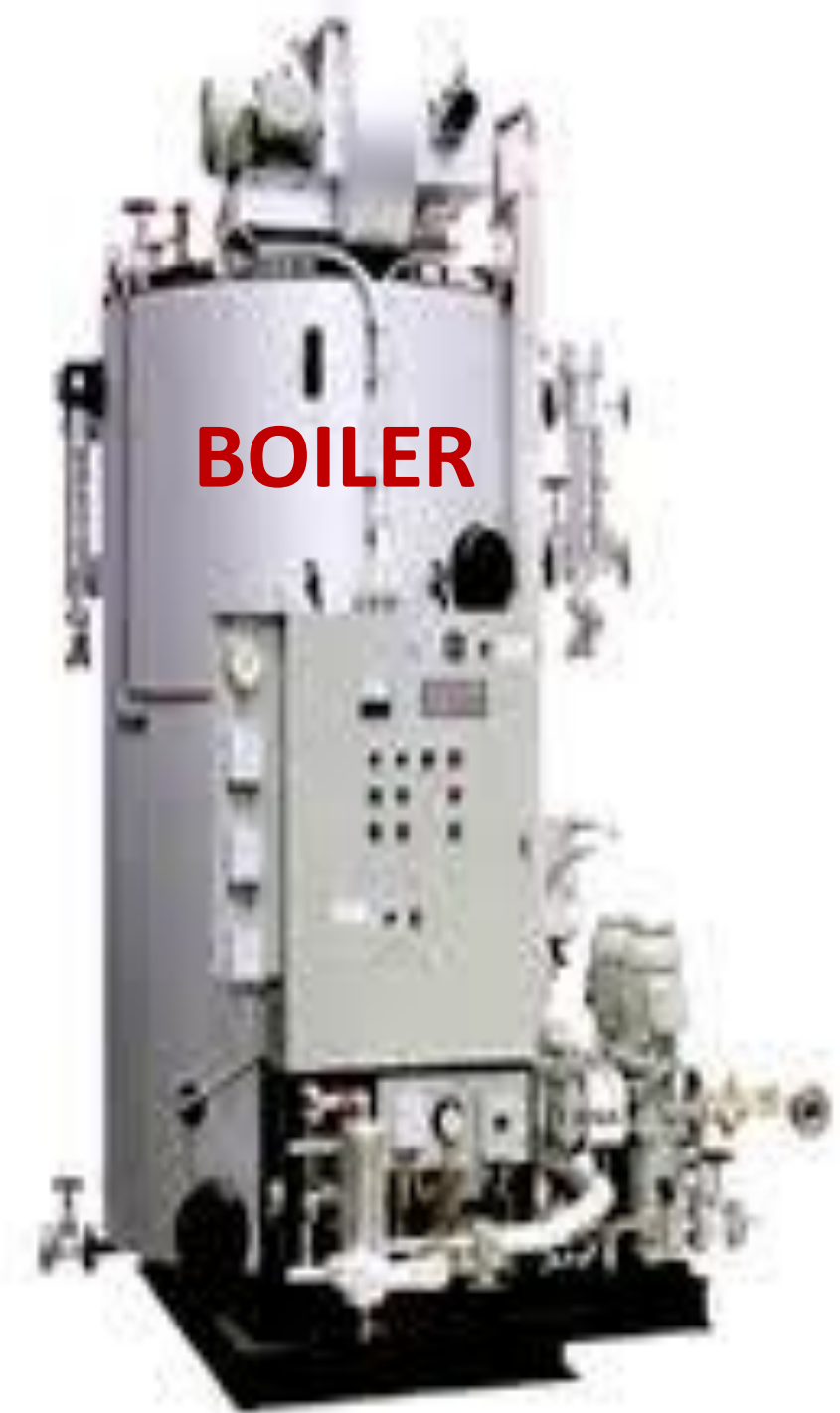
14



AIR COMPRESSOR



**FRESH WATER
HYDROPHORE SYS**



BOILER



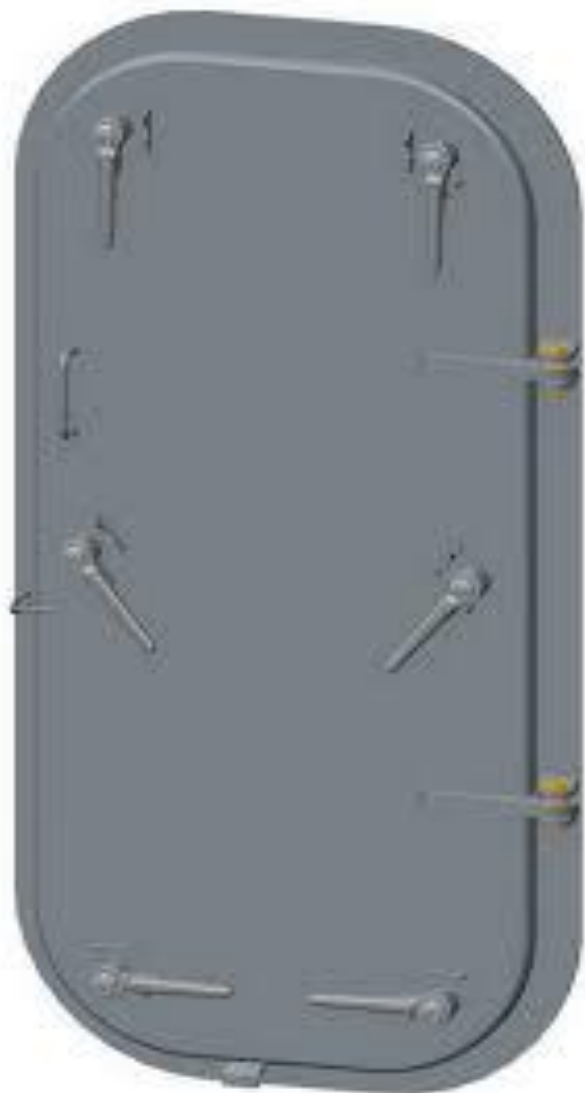
**AIR
BOTTLE**



GEAR BOX

PRODUCTS WE SUPPLY

15

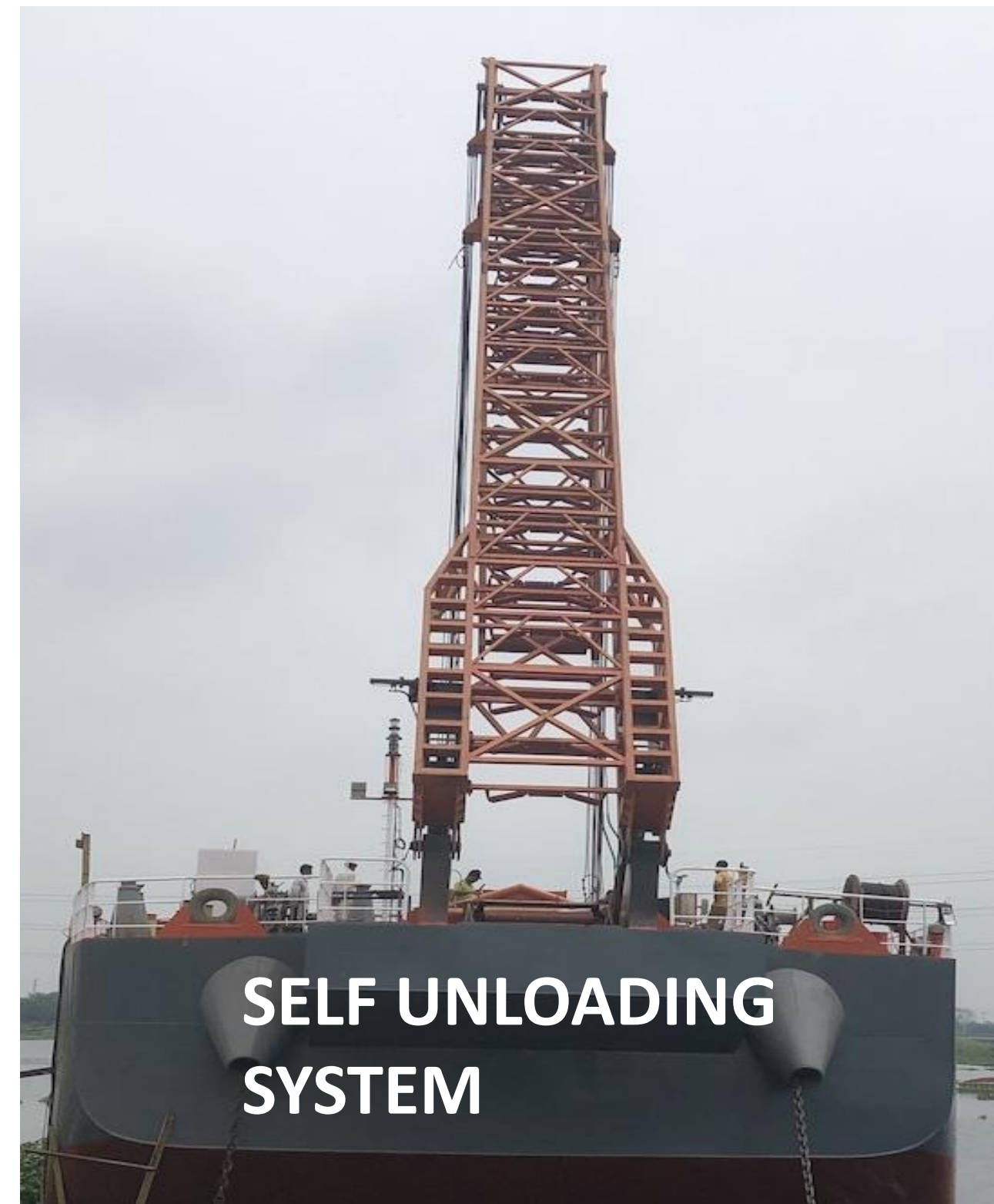


PRODUCTS WE SUPPLY

16



HATCH COVERS & GANTRY CRANE



**SELF UNLOADING
SYSTEM**



Trailer Diesel Fire Pump

UL Listed Fire Pump

**Diesel Fire Pump
(End Suction Type)**

**Diesel Fire Pump
(Multistage Type)**

Packaged Fire Pump

**Diesel Fire Pump
(Vertical Turbine Type)**

PRODUCTS WE SUPPLY

17



PRODUCTS WE SUPPLY

18



PRODUCTS WE SUPPLY

19



V Type



D Type



Roller Wheel



Marine Airbag



Cylindrical



Wing-D



W Type



Pneumatic Rubber Fender



Super Cell



M Type



Cone



Square/Rectangular



PI Type



Super Arch



Foam Filled Fender

Associated with



All type of Hatch Cover



All type of Marine Auxilary



Steering Gear



All type of heavy Equipment

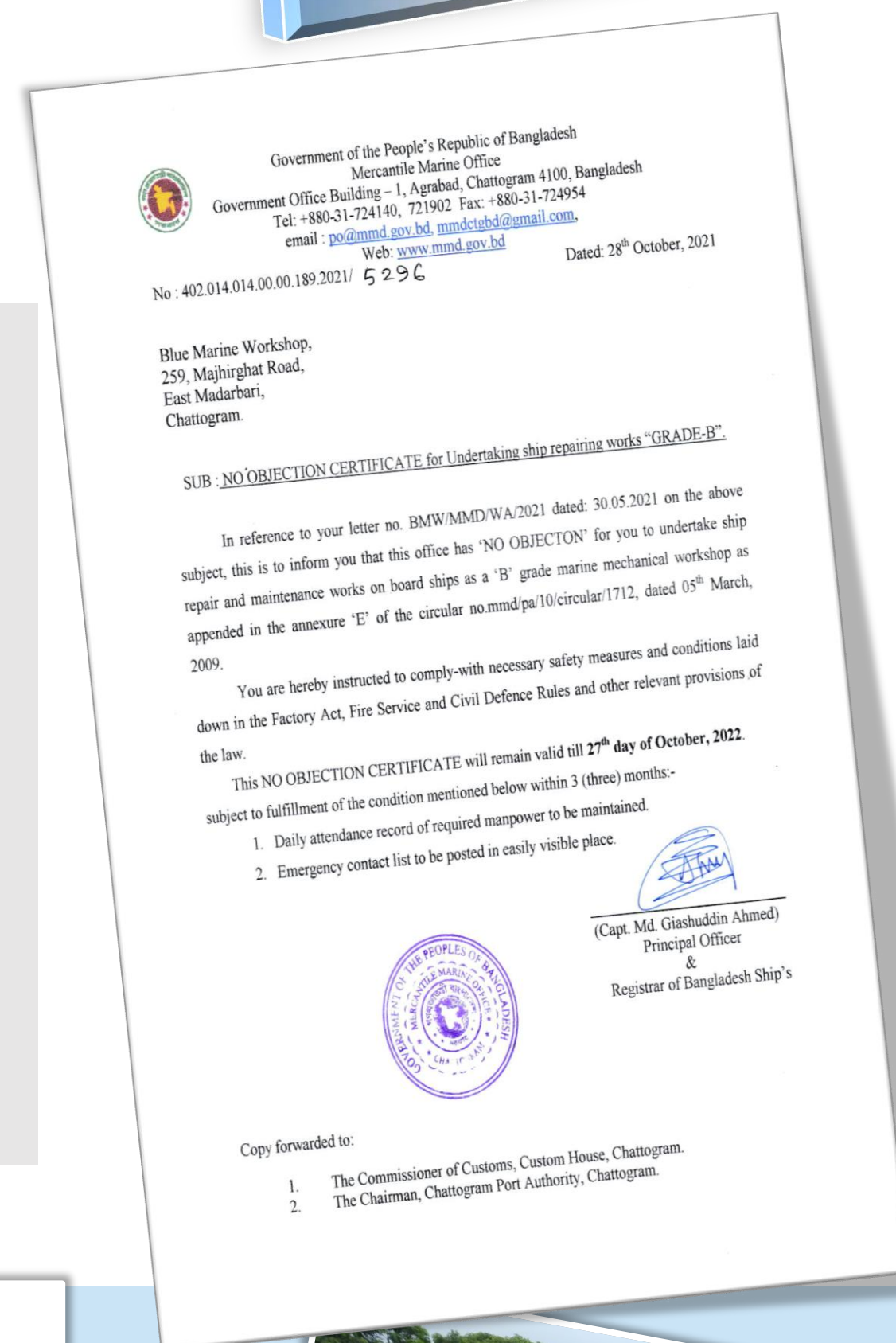


CNC Machines



KEY PARTNERS

- Vast experience in the maritime industry.
- Competitive Pricing
- Adhering to deadline
- A dedicated workforce.
- High quality





KEY PARTNERS



FABRICATION & INSTALLATION



Switchboards Fabrication inside workshop



Final Preparation for the testing of switchboard



Factory Acceptance test of Switchboard under class

Preparation for switchboard delivery



Cable Pulling & Termination onboard



Electrical works at wheelhouse console



- ISO 9001:2015 certified by Royal Cert
- Approved "A" grade shipyard by Department of Shipping (DoS) and Mercantile Marine Department (MMD) and Bangladesh University of Engineering and Technology (BUET).
- WPS Certification by Germanischer Lloyd.

Human Resources (Yard)

Managerial	- 12
General Admin./etc.	- 08
Engineers	- 20
Naval Architects	- 02
Skilled Welders	- 50
Fitters	- 25
Semi-Skilled Welders/ Workers	- 100
(Casual)	
Total	- 217

CONTACT US

Address: 402/A, Garden City Complex
(2nd Floor),
42 MM Ali Road, Wasa Circle,
Chattogram.

CEO. : arif@oberon.com.bd

Query: info@oberon.com.bd

